

2nd Floor, 100 Oxford Street, Fitzrovia

Fitzrovia

Sq Ft: 1370

Monthly Price: £1,340,500





About This Workspace

Welcome to 100 Oxford Street in the vibrant Noho district, where modern workspace meets urban energy. The second floor offers bright and inviting open-plan office accommodation, flooded with natural light to inspire productivity and creativity. Equipped with a spacious meeting room, kitchen, break-out area, and even a shower, our existing fit-out ensures that every aspect of your workday is catered to with convenience and comfort. Step into a workspace designed to foster collaboration, innovation, and well-being at 100 Oxford Street, where productivity thrives amidst the dynamic energy of Noho.

Workspace Specification

Floor/Unit	Status	Size	Price	Term
------------	--------	------	-------	------

2nd Floor

Available

1370

£1,340,500

24 months

Workspace Amenities



Access Control



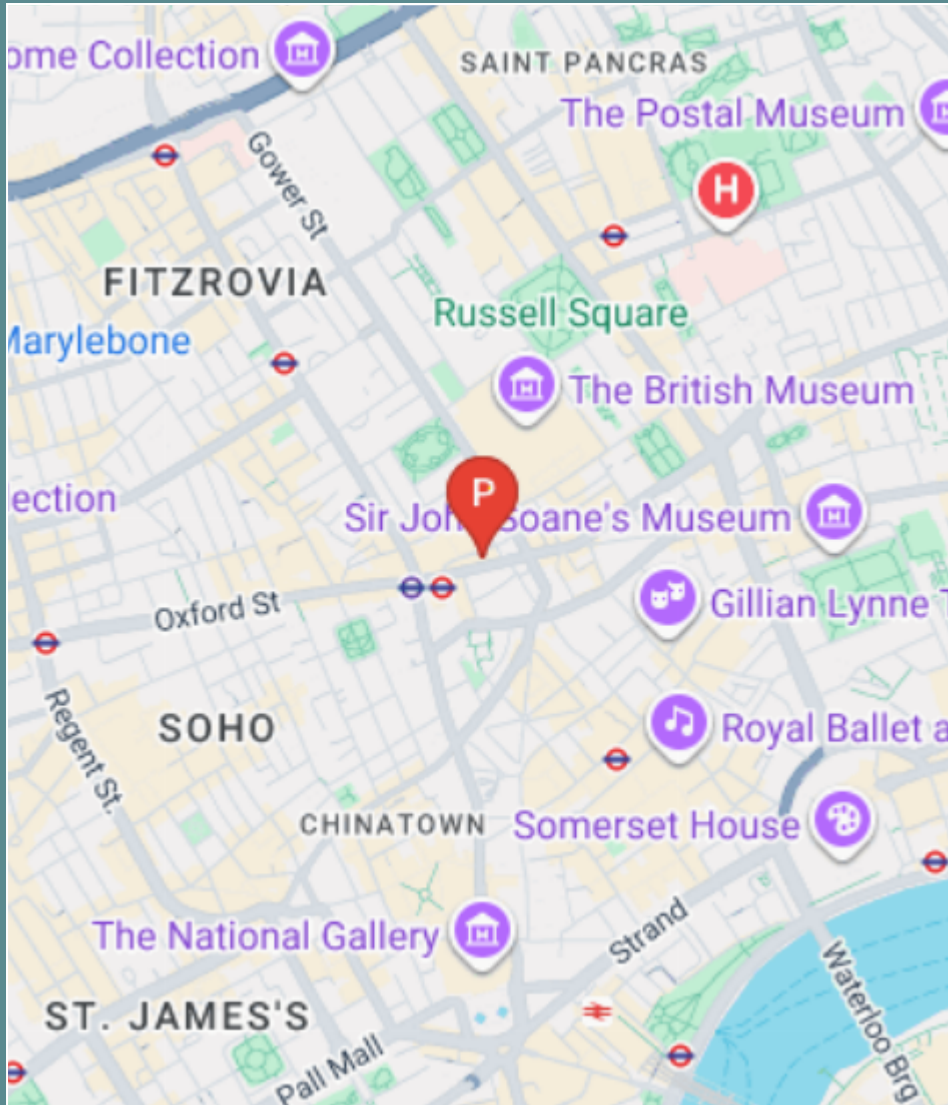
Air Conditioning



Excellent Natural Light



Lift



Connectivity

Welcome to 100 Oxford Street in the vibrant Noho district, where modern workspace meets urban energy. The second floor offers bright and inviting open-plan office accommodation, flooded with natural light to inspire productivity and creativity. Equip...



Farringdon – 26 mins walk



Fenchurch Street – 51 mins walk



Gloucester Road – 1 hour 11 mins walk



Workspace Services

Included in your sub800 workspace



Remote Concierge Service

Our remote concierge team is on hand to support you. From sourcing catering for important meeting, to planning wellness workshops, and everything in between...



Food & Beverage Deliveries

Enjoy a tailored choice of food and beverages delivered to your office. Our selections are carefully curated by our team to offer your business delightful options.



Internet & Technology

Select from a variety of internet bandwidth options, along with access to other technology products to upgrade your space



Cleaning & Waste Services

Access to allocated cleaning slots, reporting and products to suit your team's needs. Our cleaning saves you time arranging cleaning or doing it yourself.



Furniture & Fit-Out

Browse on the sub800 shop for our extensive range of furniture items, meeting room installations, have a bespoke consultation with our team.



Health & Safety Onboarding

A comprehensive health and safety onboarding pack that details how you can ensure your workspace is safe, as well as a list of preferred suppliers and rates



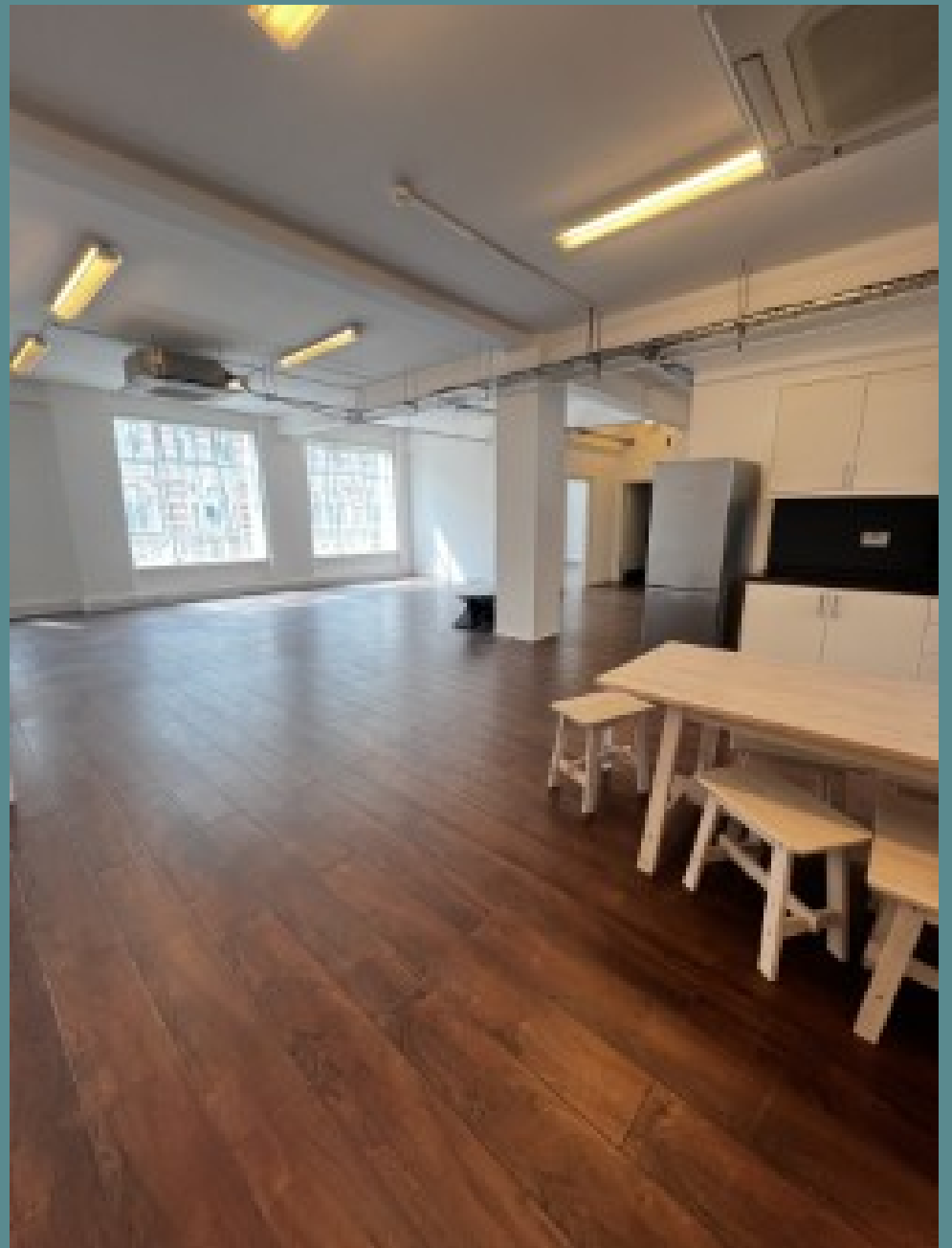
Repairs & Support

sub800 provide your business with light repairs and the option to source specialist works with preferred suppliers and rates



Member's Club Access

Access to exclusive member's clubs for the C-Suite level of your team, giving them access to external meeting space, events and networking opportunities





[Make An Enquiry](#)

[Book A Viewing](#)

enquiries@sub800.com | [0207 052 3025](tel:02070523025) | www.sub800.com